

GOLF COLLECTION
SS2025

EST 1907
Alan  Paine
ENGLAND

SS2025

ALAN PAINE KNITWEAR COLLECTION



WELCOME

Our SS25 golf collection of lightweight knits, polo shirts and adaptable separates is designed for golfers by golfers and brings together a range of versatile, functional styles in a choice of natural fibres and fabrics for maximum comfort on and off the course.

We recognise the importance of polo shirts in a golfer's summer wardrobe and our extensive range includes the softest Peruvian Pima stretch cotton polo shirts in a host of summery colours, a new phased stripe moisture-wicking performance polo as well as a choice of new eye-catching stripes plus an argyle front polo in ultra-lightweight high twist cotton.

Additional new items in the collection include a quarter zip gilet in cotton cashmere, a standout three-colour striped quarter zip in cotton silk cashmere and our sustainable Calsall hybrid gilet with ultra-lightweight plant-based insulation, perfect for cooler summer days on the course.

Alan Paine continues to create stylish, indispensable layers for today's golfing wardrobe.

SIZE GUIDE

KNITWEAR

SIZE		38	40	42	44	46	48	50
UPDATED FIT	CHEST WIDTH - CM	52	54	56	58	60	62	64
	SLEEVE WIDTH - CM	18	19	20	21	22	23	24

LIFESTYLE COTTON SHIRTS

SIZE		S	M	L	XL	2XL	3XL
CLASSIC FIT	CHEST WIDTH - CM	57	59	63	68	73	78
	BOTTOM WIDTH - CM	55.5	57.5	61.5	67.5	71.5	76.5

PIQUÉ POLO SHIRTS

SIZE		1	2	3	4	5	6	7
UK AND EUROPE		S	M	L	XL	2XL	3XL	4XL
	CHEST WIDTH - CM	52	54.5	57	59.5	62	64.5	67
	WIDTH AT BOTTOM - CM	50	52.5	55	57.5	60	62.5	65

SIZE		1	2	3	4	5	6	7
USA - LOOSER FIT		XS	S	M	L	XL	2XL	3XL
	CHEST WIDTH - INCHES	20 1/2	21 1/2	22 1/2	23 1/2	24 1/2	25 1/2	26 1/2
	WIDTH AT BOTTOM - INCHES	19 3/4	20 3/4	21 3/4	22 3/4	23 3/4	24 3/4	25 3/4

PLEASE NOTE:

Order closing date for Woven Shirts – 6th Sept 2024







Order closing date for Knitwear, Polo Shirts and Jackets – 20th Sept 2024

EARLIEST AVAILABILITY:

Knitwear, Polo Shirts and Jackets – End January 2025

Woven Shirts – Mid February 2025

CONTENTS

PIQUÉ AND JERSEY POLO SHIRTS	07	
100% COTTON	19	
COTTON CASHMERE	31	
COTTON SILK CASHMERE	37	
COTTON MERINO	43	
LIFESTYLE	49	

SS2025

ALAN PAINE KNITWEAR COLLECTION





PIQUÉ AND JERSEY POLO SHIRTS

From the softest Peruvian Pima cotton polo shirts with a touch of elastic for the ultimate fit to moisture-wicking performance polos, this collection of pique and jersey polo shirts offer a flexible fit for maximum comfort.

New season colours evoke the essence of summer with coral and pistachio bringing pops of brightness and Alan Paine green set to become an enduring range favourite.

A new phased stripe polo is added to our performance polo shirt offering. Crafted in the same super-lightweight Polyester/spandex blend and in two summery stripe options, advanced moisture-wicking properties keep golfers cool and dry from tee-off to the 19th hole while built-in UV protection shields them from the sun.

Comfortably soft, comfortably cool and comfortably colourful.

IMAGE SHOWS FRITTON PIQUE POLO SS2025 SHADES

97% PERUVIAN PIMA COTTON / 3% ELASTIC

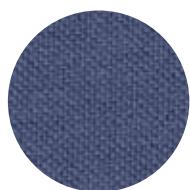
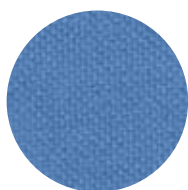
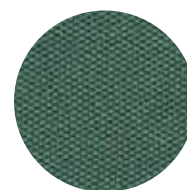
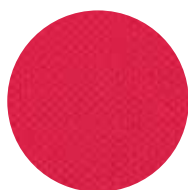
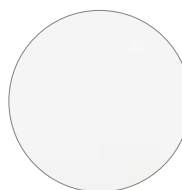
**FRITTON**

SHORT SLEEVE PIQUÉ POLO WITH TONAL AP LOGO

LS2008

SIZE 1 - 7 (SEE PAGE 4 FOR DETAILS)

PLEASE NOTE THAT IF ORDERING THE ABOVE WITHOUT LOGO THEN THE STYLE NO IS LS2008NE

NAV
NAVYMBL
MID BLUELBL
LIGHT BLUEPSO
PISTACHIOAPG
ALAN PAINE GREENCRL
CORALRBY
RASPBERRYLEM
LEMONWHT
WHITE

97% PERUVIAN PIMA COTTON / 3% ELASTIC

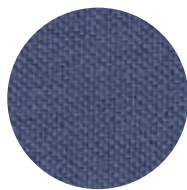


REED

LONG SLEEVE PIQUE POLO

LS2304

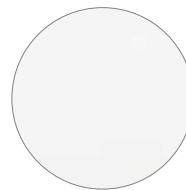
SIZE 1 - 7 (SEE PAGE 4 FOR DETAILS)



NAV
NAVY



LBL
LIGHT BLUE



WHT
WHITE

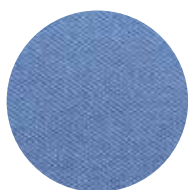
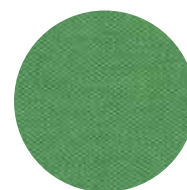
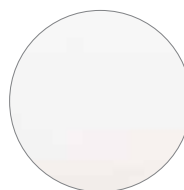
100% PERUVIAN COTTON

**WEYMOUTH**

SHORT SLEEVE WASHED EFFECT PIQUÉ SHIRT

LS1624NE

SIZE 1 - 7 (SEE PAGE 4 FOR DETAILS)

NAV
NAVYRGA
REGATTALBL
LIGHT BLUEPSO
PISTACHIOPNE
PINECLA
CLARETLEM
LEMONAMB
AMBERWHT
WHITE

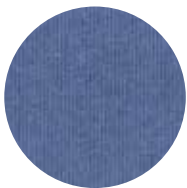
94% PERUVIAN COTTON / 6% SPANDEX



TUTBURY
SHORT SLEEVE FADED JERSEY POLO
LS2101NE
SIZE 1 - 7 (SEE PAGE 4 FOR DETAILS)



NAV
NAVY



RGA
REGATTA



LBL
LIGHT BLUE



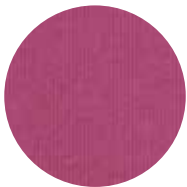
CBN
CARIBBEAN



PNE
PINE



CRL
CORAL



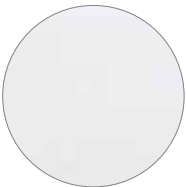
CLA
CLARET



PLP
PALE PINK



LEM
LEMON



WHT
WHITE

97% PERUVIAN PIMA COTTON / 3% ELASTIC

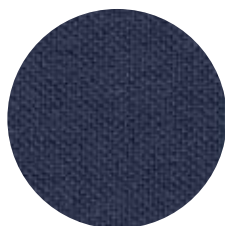


LAKESHORE

SHORT SLEEVE POLO WITH CONTRAST
UNDER COLLAR AND LOGO DETAIL

CHLS2402

SIZE 1 - 7 (SEE PAGE 4 FOR DETAILS)

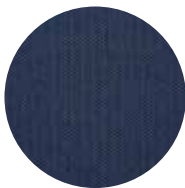


NAV
NAVY

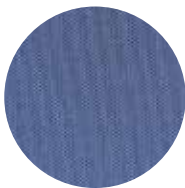
92% POLYESTER / 8% SPANDEX
PERFORMANCE POLO SHIRTS



ROCKBOURNE - SPORTS FIT
PERFORMANCE THREE BUTTON POLO SHIRT
LS2303
SIZE 1 - 7 (SEE PAGE 4 FOR DETAILS)



NAV
NAVY



MBL
MID BLUE



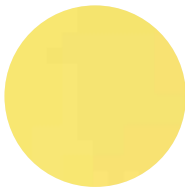
LBL
LIGHT BLUE



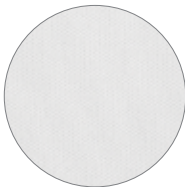
PLU
PLUM



CAT
CARNATION



SLR
SOLAR



WHT
WHITE

92% POLYESTER / 8% SPANDEX

PERFORMANCE POLO SHIRTS

**WATERBEACH - SPORTS FIT**

PERFORMANCE THREE BUTTON STRIPE POLO SHIRT

LS2302

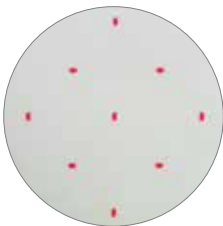
SIZE 1 - 7 (SEE PAGE 4 FOR DETAILS)

S2355
MID BLUE / WHITES2356
CARNATION / WHITES2357
NAVY / LIGHT BLUES2358
PLUM / WHITE

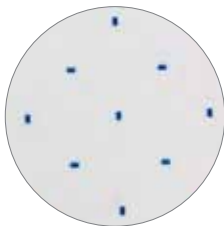
92% POLYESTER / 8% SPANDEX
PERFORMANCE POLO SHIRTS



SHALFORD - SPORTS FIT
PERFORMANCE PRINT DESIGN POLO SHIRT
LS2405
SIZE 1 - 7 (SEE PAGE 4 FOR DETAILS)



S2485
RED DASH



S2486
BLUE DASH

92% POLYESTER / 8% SPANDEX

PERFORMANCE POLO SHIRTS

**BALSHAM - SPORTS FIT**

PHASED STRIPE PERFORMANCE POLO

LS2532

UK 1 - 7 (SEE PAGE 4 FOR DETAILS)

S2590
BLUE STRIPES2591
CORAL STRIPE

92% POLYESTER / 8% SPANDEX
PERFORMANCE POLO SHIRTS

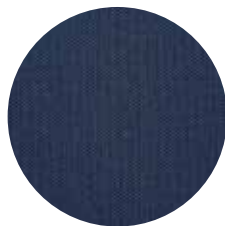


RAINFORD - SPORTS FIT

PERFORMANCE 1/4 ZIP MOCK NECK

LS2403

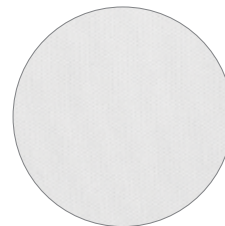
SIZE 1 - 7 (SEE PAGE 4 FOR DETAILS)



NAV
NAVY



LBL
LIGHT BLUE



WHT
WHITE

SS2025

ALAN PAINE KNITWEAR COLLECTION





100% COTTON

Cotton has been a cornerstone of our summer collection since the creation of our traditional cable sweater in the early years and the benefits of this durable yarn are plenty. Lightweight and breathable, it is comfortably soft worn next to the skin, making it perfect for long hours on the course.

The ultra-lightweight high twist cotton range is extensive. Twisting fibres together creates a super soft, lighter yarn with a dry handle, ideal for summer and warmer climes. The exciting new range features classic summer staples, eye-catching striped polos and a striking argyle front short sleeve polo inspired by Alan Paine's British heritage.

A vee neck is reintroduced in cotton faded dye. This pure cotton lynchpin of layering undergoes an intricate series of processes to achieve a vintage, faded look without compromising its soft, almost silky feel.

Versatile styles for on and off the course.

IMAGE SHOWS BURNINGTON STRIPE POLO IN SHADE LT GREY MIX BASE

100% HIGH TWIST COTTON

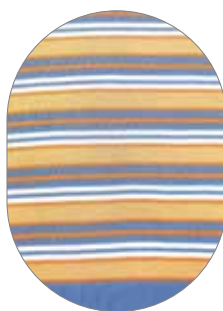
16G = 2/60NE X 2 ENDS

**ABINGTON - UPDATED FIT**

16G SHORT SLEEVE STRIPE POLO SHIRT

416A23

UK 38 - 50

S2520
INDIGO MIX BASES2519
BLUE HAZE BASE

100% HIGH TWIST COTTON

16G = 2/60NE X 2 ENDS

**BURNINGTON - UPDATED FIT**

16G SHORT SLEEVE STRIPE POLO SHIRT

416A24

UK 38 - 50

S2522
NAVY BASES2523
LIGHT GREY MIX BASE

100% HIGH TWIST COTTON

16G = 2/60NE X 2 ENDS

**CLARENDON - UPDATED FIT**

16G SHORT SLEEVE STRIPE POLO SHIRT

416A25

UK 38 - 50

S2524
LIGHT GREY MIX BASES2527
NAVY BASE

100% HIGH TWIST COTTON

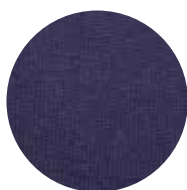
16G = 2/60NE X 2 ENDS

**PAIGNTON - UPDATED FIT**

16G SHORT SLEEVE POLO SHIRT

416A38

UK 38 - 50

DKN
DK NAVYSBX
STEEL BLUE MIXAPG
ALAN PAINE GREENLDX
LANDSCAPE MIXCRL
CORALCHY
CHERRYBRR
BRIGHT ROSELGX
LT GREY MIXBLA
BLACK

100% HIGH TWIST COTTON

14G = 2/40NE X 2 ENDS

**WHITFIELD - UPDATED FIT**

14G LONG SLEEVE ARGYLE FRONT VEE NECK

C16A07

UK 38 - 50

**FALFIELD - UPDATED FIT**

14G SHORT SLEEVE ARGYLE FRONT POLO

C16A08

UK 38 - 50

S2517
FRENCH NAVY BASES2518
ECRU BASE

IMAGE SHOWS FALFIELD ARGYLE FRONT POLO IN SHADE ECRU BASE



100% HIGH TWIST COTTON

16G = 2/60NE X 2 ENDS



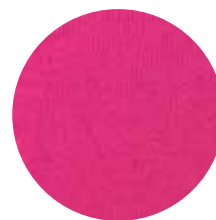
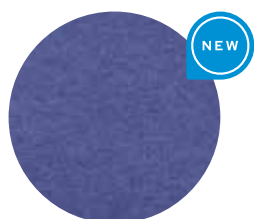
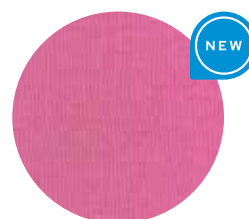
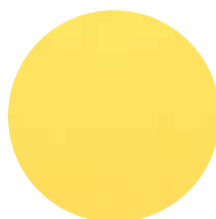
HALLWORTHY - UPDATED FIT

16G LONG SLEEVE VEE NECK

416A36

UK 38 - 50

AVAILABLE IN 18 SHADES

BLA
BLACKAPG
ALAN PAINE GREENLGX
LT GREY MIXBRR
BRIGHT ROSEDKN
DK NAVYLDX
LANDSCAPE MIXBOC
BURNT OCHREPAL
PALM GREENINX
INDIGO MIXCHY
CHERRYMAO
MANGOCSP
COSMOS PINKARF
AIRFORCEECR
ECRUSUN
SUNLIL
LILACSBX
STEEL BLUE MIXCRL
CORAL

100% HIGH TWIST COTTON

14G = 2/40NE X 2 ENDS

**RUMFORD - UPDATED FIT**

14G 1/4 ZIP SADDLE SHOULDER CONCEALED ZIP

116A02

UK 38 - 50

DKN
DK NAVYINX
INDIGO MIXSBX
STEEL BLUE MIXLDX
LANDSCAPE MIXCHY
CHERRYMAO
MANGOLGX
LT GREY MIX

100% COTTON FADED DYE

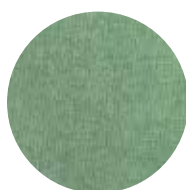
12G = 2/30NE X 2 ENDS - 14G = 2/40NE X 2 ENDS

**KEWSTOKE - UPDATED FIT**

14G LONG SLEEVE FADED DYE VEE NECK

116U07

UK 38 - 50

RGA
REGATTAPNE
PINECLA
CLARET

SS2025

ALAN PAINE KNITWEAR COLLECTION





COTTON CASHMERE

The fusion of Pima cotton and cashmere creates the softest, most comfortable cotton blend. Pima cotton for its exceptional softness, luminous lustre and durability and only the first quality fibres from pure-bred Mongolian cashmere goats for additional softness and breathability thanks to the delicacy of the cashmere strands which act as a form of thermostat.

The perfect blend for year-round course comfort, these two prestigious natural fibres combine to envelop you in sheer luxury, in a superbly soft garment with incredible drape. A new addition in this summer yarn blend is the quarter zip gilet with contrast back neck tipping, guaranteed to become a seasonal favourite.

Comfortably soft and comfortably cool.

IMAGE SHOWS ROTHWELL COTTON CASHMERE VEE IN SHADE RASPBERRY

PIMA COTTON 92% / CASHMERE 8%

14G = 2/50's X 1 END / 12G = 2/50's X 2 ENDS / 7G = 4 ENDS X 2/50's



ROTHWELL - UPDATED FIT

12G INSET SLEEVE VEE NECK

196T01

UK 38 - 50



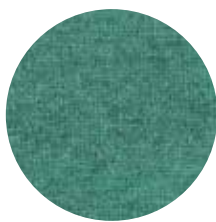
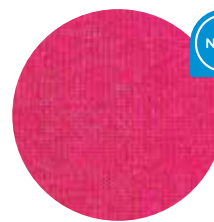
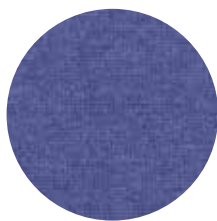
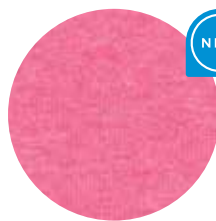
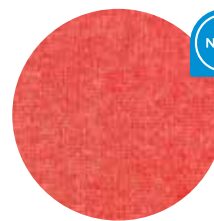
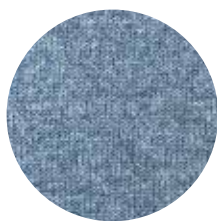
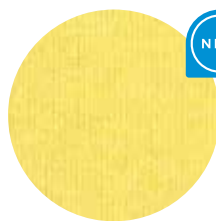
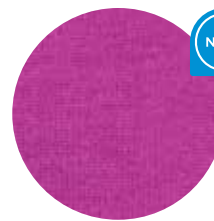
SELHURST - UPDATED FIT

12G 1/4 ZIP MOCK NECK

196C12

UK 38 - 50

AVAILABLE IN 18 SHADES

DKN
DK NAVYMLA
MOORLANDDOV
DOVERBY
RASPBERRYIND
INDIGOLDS
LANDSCAPECAT
CARNATIONCRL
CORALARF
AIRFORCECOF
COFFEELEM
LEMONMAO
MANGOCUE
CAROLINA BLUESAN
SANDSPM
SPEARMINTBZO
BLAZING ORANGESEB
STEEL BLUEORC
ORCHID

PIMA COTTON 92% / CASHMERE 8%

14G = 2/50's X 1 END / 12G = 2/50's X 2 ENDS / 7G = 4 ENDS X 2/50's

**ROWLEY - UPDATED FIT**

12G 1/4 ZIP GILET WITH BACK NECK TIPPING

196A05

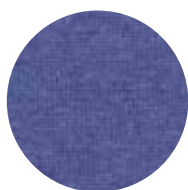
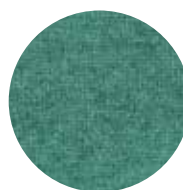
UK 38 - 50

**ELLERBY - UPDATED FIT**

12G VEE NECK SLIPOVER

196K07

UK 38 - 50

DKN
DK NAVYIND
INDIGOCUE
CAROLINA BLUEMLA
MOORLANDCOF
COFFEESAN
SANDBZO
BLAZING ORANGEDOV
DOVE

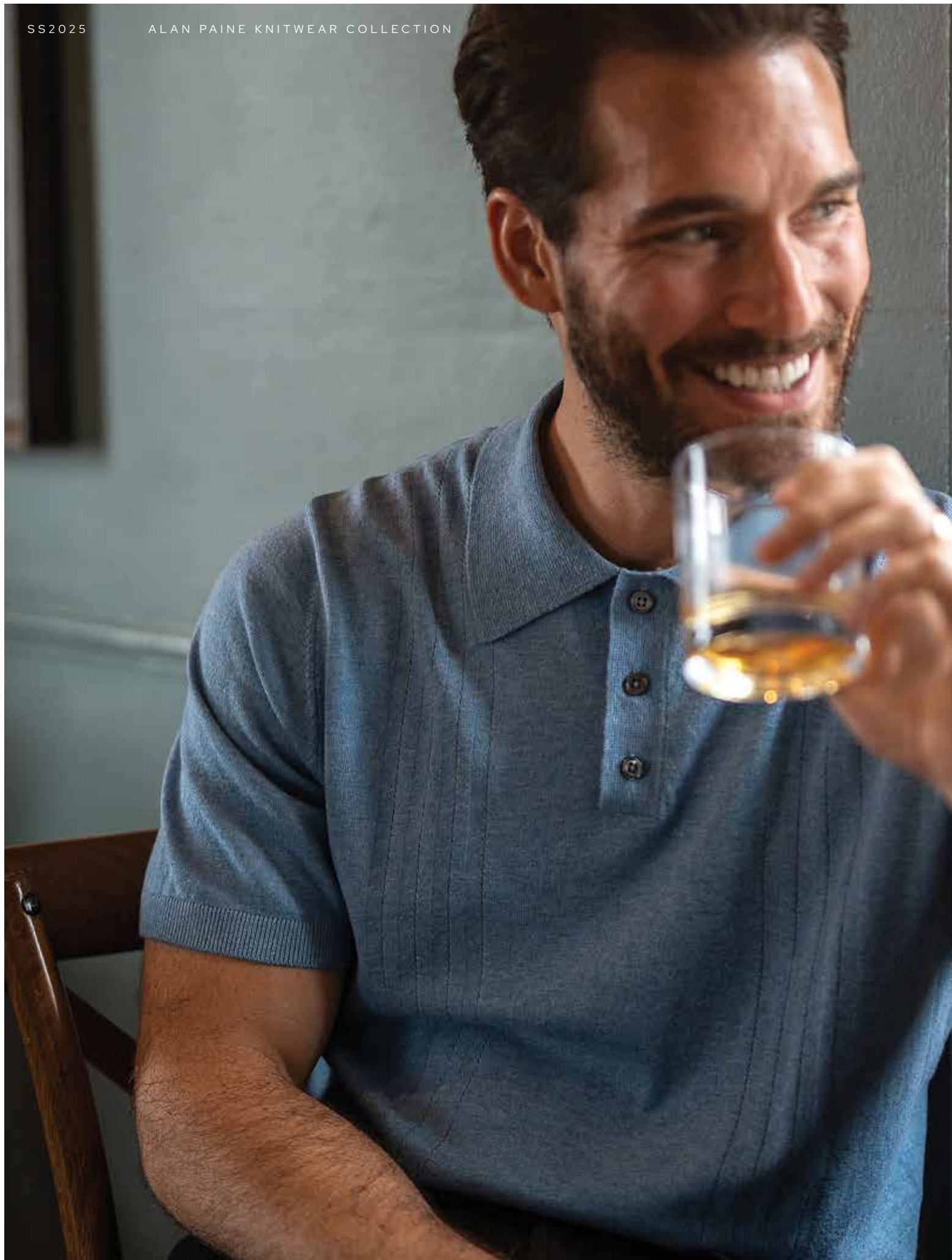
* PLEASE NOTE: FOR 196A05 THE TIPPING INSIDE THE COLLAR ON ALL SHADES WILL BE DOVE. EXCEPT DOVE WHICH WILL BE DK NAVY

IMAGE SHOWS ROMLEY 1/4 ZIP GELIET WITH TIPPING IN SHADE DOVE AND REED IN SHADE NAVY



SS2025

ALAN PAINE KNITWEAR COLLECTION





COTTON SILK CASHMERE

The combination of the finest Pima cotton, silk and pure cashmere results in a truly luxurious blend with a super-soft feel and luxe appearance.

The super softness of the Pima cotton and cashmere fuse with pure silk which acts as a temperature regulator for additional comfort.

This super yarn mix creates ultra-lightweight standout knits. A short sleeve three-button polo with pointelle detail and a three-colour striped quarter zip are new season additions.

Comfortably light, comfortably soft and comfortably cool.

IMAGE SHOWS KNIGHTON COTTON SILK CASHMERE POINTELLE POLO SHIRT IN CAROLINA BLUE

PIMA COTTON 70% / SILK 20% / CASHMERE 10%

14G = 2/50's X1 END



CROMFORD - UPDATED FIT

14G LUXURY COTTON VEE NECK

189C01

UK 38 - 50



STOWBRIDGE - UPDATED FIT

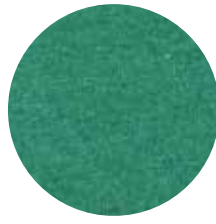
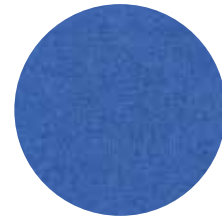
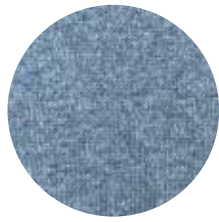
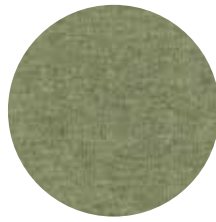
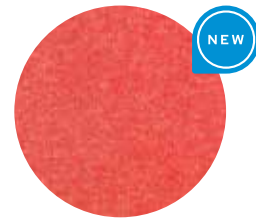
14G 1/4 ZIP MOCK NECK WITH TIPPED TRIM

189H05

UK 38 - 50

* PLEASE NOTE: FOR 189H05 THE TIPPING INSIDE THE COLLAR ON ALL SHADES WILL BE DOVE. EXCEPT DOVE WHICH WILL BE DK NAVY

AVAILABLE IN 12 SHADES

DKN
DK NAVYMLS
MOORLANDRGA
REGATTAARF
AIRFORCELDS
LANDSCAPEORC
ORCHIDCUE
CAROLINA BLUESAN
SANDCRL
CORALSEB
STEEL BLUEDOV
DOVELEM
LEMON

PIMA COTTON 70% / SILK 20% / CASHMERE 10%

14G = 2/50's X1 END

**PENTLOW - UPDATED FIT**

14G LUXURY COTTON LONG SLV POLO SHIRT

189C19

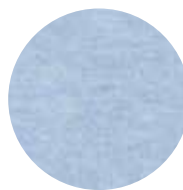
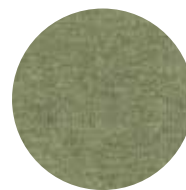
UK 38 - 50

**KNIGHTON - UPDATED FIT**

14G THREE BUTTON POLO WITH POINTELLE DETAIL

189A04

UK 38 - 50

DKN
DK NAVYARF
AIRFORCECUE
CAROLINA BLUESEB
STEEL BLUELDS
LANDSCAPESAN
SANDCRL
CORALDOV
DOVE

PIMA COTTON 70% / SILK 20% / CASHMERE 10%

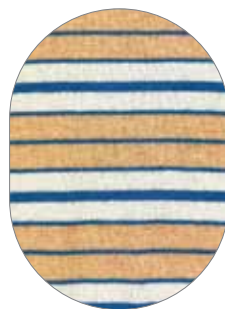
14G = 2/50's X 1 END

**ARLINGTON - UPDATED FIT**

14G THREE COLOUR STRIPE 1/4 ZIP MOCK

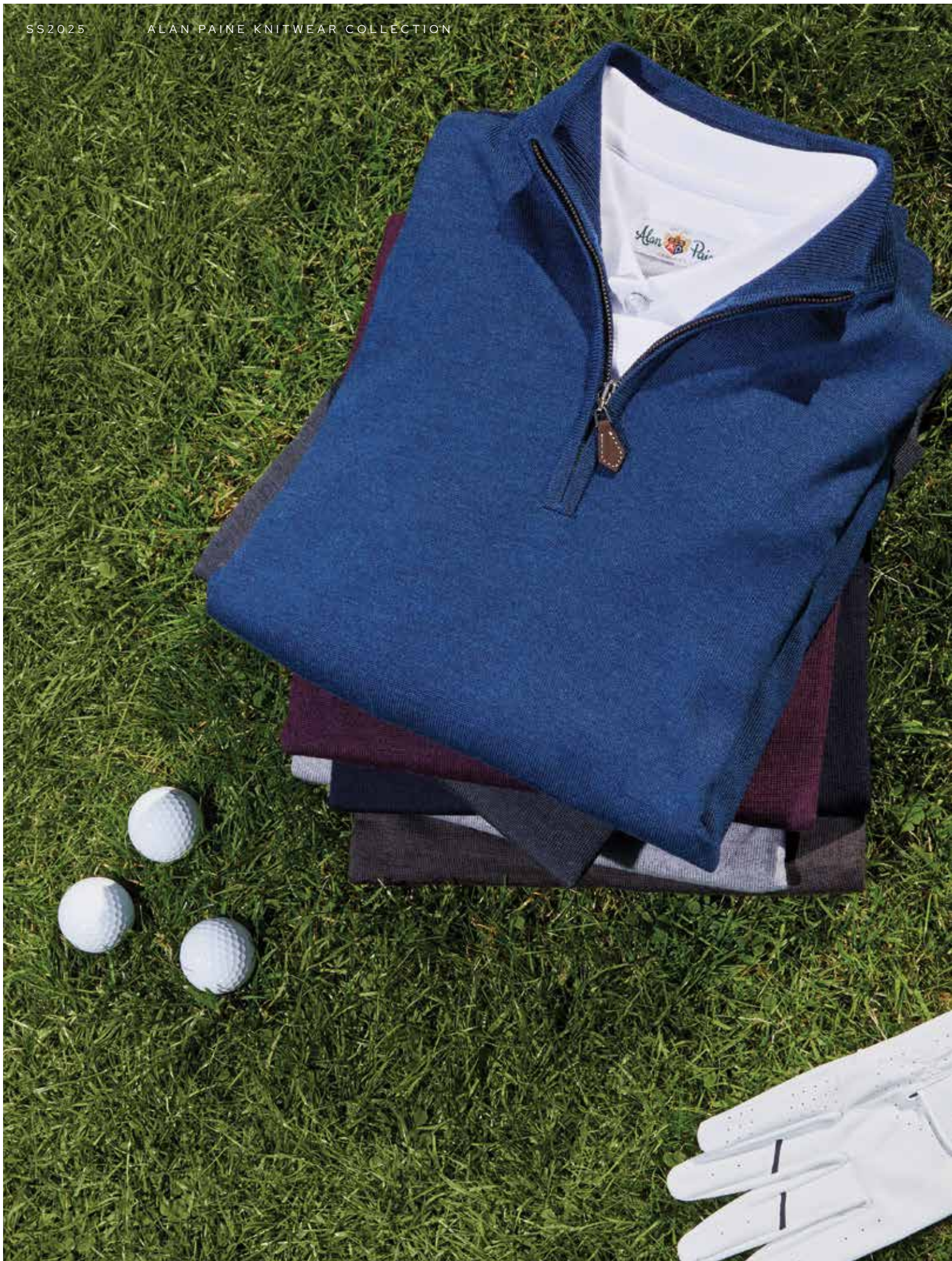
189A16

UK 38 - 50

S2510
CAROLINA BLUE BASES2511
MANGO BASE

SS2025

ALAN PAINE KNITWEAR COLLECTION





COTTON MERINO

Ethically sourced merino wool and cotton combine for this beautifully soft, breathable yarn blend.

Cotton merino knitwear blends the breathability of cotton with the moisture-wicking and temperature-regulating properties of merino wool, providing optimal comfort and versatility for summer and all-year-round days.

This cutting-edge yarn is spun using a compact spinning system. This gives a superior, regular and smooth quality, which also enhances the performance in wash and wear. The Australian sourced merino wool is mercerised for a lustrous, clean appearance.

A new non-zip hoodie is added in the trans-seasonal super yarn. Another wardrobe staple, the lighter weight layer features the classic draw cord neck and hood together with a ribbed hem and cuffs. The colour palette is considered, encompassing enduring shades to suit every season.

Every day, year-round wear.

IMAGE SHOWS ASHFIELD COTTON MERINO 1/4 ZIP IN SHADE DENIM WITH FRITTON PIQUE POLO IN SHADE WHITE

50% COTTON / 50% MERCERISED MERINO

12G = 1 END X 2/30's

**ASHFIELD - UPDATED FIT**

12G INSET SLEEVE 1/4 ZIP MOCK NECK

164Z64

UK 38 - 50

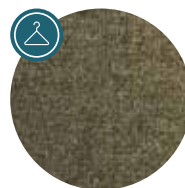
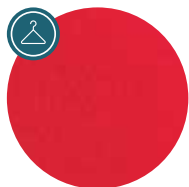
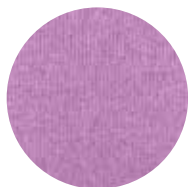
DKN
DK NAVYDEN
DENIMGLA
GLACIERSEW
SEAWEEDOAT
OATMEALRED
REDLIL
LILACLGX
LT GREY MIX

IMAGE SHOWS COTTON MERINO BLEND ASHFIELD 1/4 ZIP MOCK IN GLACIER



50% COTTON / 50% MERCERISED MERINO

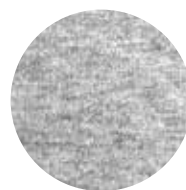
12G = 1 END X 2/30's

**GAISBY - UPDATED FIT**

12G LONG SLEEVE CASUAL HOODIE

164A40

UK 38 - 50

DKN
DK NAVYGLA
GLACIEROAT
OATMEALLGX
LT GREY MIX

50% COTTON / 50% MERCERISED MERINO

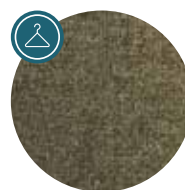
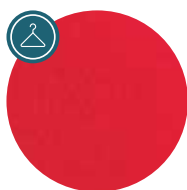
12G = 1 END X 2/30's

**SADDINGTON - UPDATED FIT**

12G RAGLAN SLEEVE CREW NECK SWEATSHIRT

164Z22

UK 38 - 50

DKN
DK NAVYDEN
DENIMGLA
GLACIERSEW
SEAWEEDOAT
OATMEALRED
REDLIL
LILACLGX
LT GREY MIX

SS2025

ALAN PAINE KNITWEAR COLLECTION





LIFESTYLE

Complete your golf wear with the new hybrid Calsall gilet, a lightweight wonder layer, or a reversible lightweight summer gilet, which offers two looks in one.

An adjustable cotton canvas baseball cap will protect you from the sun's glare and, for hot days off the course, cotton stretch shorts will keep you comfortably cool in style.

IMAGE SHOWS GRIFFIN BOMBER JACKET IN NAVY WITH TUTBURY FADED COTTON POLO IN LEMON

**CHCALGGIL**

CALSALL MEN'S HYBRID GILET

UK S - 5XL

- 100% RECYCLED POLYESTER
- DUPONT® SORONA ULTRA SOFT AND DURABLE FIBREFILL
- ULTRA-LIGHTWEIGHT PLANT BASED INSULATION
- ZIP-SECURED POCKETS
- SOFTSHELL SIDE PANELS
- ELASTICATED HEM AND ARMHOLES



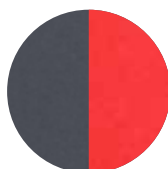
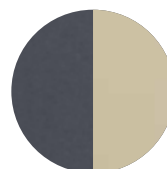
NAVY

**CHLS2015**

LETTOCH REVERSIBLE LIGHTWEIGHT SUMMER GILET

UK S - 3XL

- LIGHTWEIGHT COMPACT 100% POLYESTER
- REVERSIBLE TWO COLOUR OUTER
- ZIP SECURED POCKETS ON OUTER AND TWO FURTHER ROUNDED PATCH POCKETS ON INNER SHELL
- DROP BACK SPORTS HEM
- LOW COLLAR FOR COMFORT

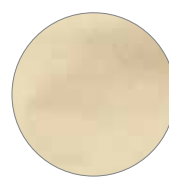
NAV/RED
NAVY/REDNAV/BEI
NAVY/BEIGE

**LS2524**

EASTWELL - 54CM SHORTS

UK 30 - 46

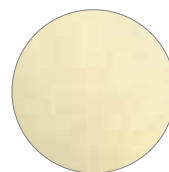
- MICRO TOUCH 98% COTTON / 2% ELASTANE STRETCH OUTER
- CENTRE BUTTON FRONT FLY WITH ZIP FASTENING
- TWO ANGLED FRONT POCKETS
- TWO BACK JETTED POCKETS

DKN
DARK NAVYSTN
STONEOWT
OFF WHITE**LS2531**

GREENWOOD - PERFORMANCE SHORTS

UK 30 - 46

- 84% POLYESTER / 16% SPANDEX
- FOUR POCKET
- STRETCH SHORT
- ZIP AND BUTTON FASTENING

NAV
NAVYSTN
STONE

**CHACCB CAP**

BASEBALL CAP

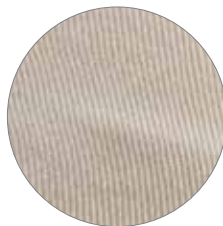
ONE SIZE

- 100% COTTON OUTER
- CLASSIC BASEBALL CAP

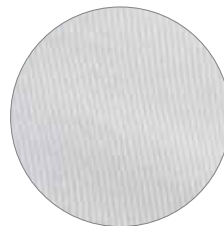
NO EMBROIDERY ALSO AVAILABLE: ACCBCNE



NAVY



SAND



WHITE



EMBROIDERY

Examples of just some of the embroidery produced for our partner golf clubs are shown opposite.

From a simple tonal logo to complex multi-coloured, we have the ability to embroider onto knitwear, piqué and jersey polos.

We make sure that the process from artwork through to embroidery is a smooth one.

We'll discuss your embroidery requirements in detail, generate artwork for approval then send to the embroiderer for stitching.

Each embroidery is individually costed based on the complexity of the design.

Please note that the minimum order for embroidery is 12 pieces.



FALSTERBO | SE



SOTOGRADE | ESP



CUDDINGTON | UK



ALAN PAINE KNITWEAR, 4A HAMILTON WAY, OAKHAM BUSINESS PARK
MANSFIELD, NOTTINGHAMSHIRE NG18 5BU, ENGLAND

E: SALES@ALANPAINE.CO.UK

T: +44 (0) 1623 415760

WWW.ALANPAINE.CO.UK