



SAKMANN®



2022



100% cotton ribbed terry cloth / 16" W x 36" L

Custom Art Placement • Available in White, Navy and Black • Four Stripe Colors
All towels are made in the USA.

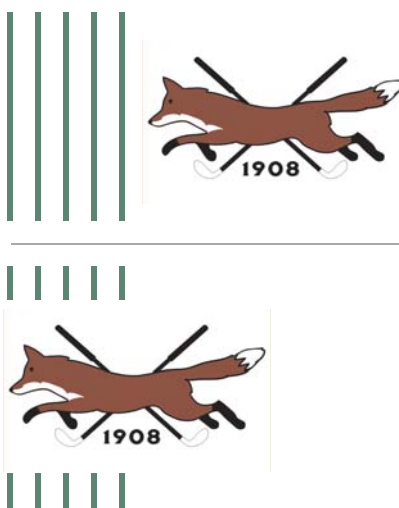
Customized with your branding

EMBROIDERY



Select from full color or tonal embroidery matched to stripe color

WOVEN



Sakmann's art department can use your logo or we can create special art for any event

Select from embroidery or art woven directly into the towel

Woven logos may be placed to the right of stripes or through stripes for an even more customized appearance

WWW.WARRICKHILLS.GOLF

HOME OF PGA CHAMPIONS

Warwick Hills

the ally challenge

PRESENTED BY McLaren



Grommet and hook can be added to SPORT TOWEL for additional price in brass, silver or black. Hooks priced by finish

COLOR CHART WITH PMS COLOR NO.	
SCOUR	PINK 226
BLEACH	RED 185
YELLOW	12 LIGHT PURPLE 183
ORANGE	648 LIGHT PINK 243
CEAN BLUE	304 NAVY BLUE 289
AQUA	3125 BLACK
OLD GOLD	804 BURGUNDY 209
TAN	7510 DARK RED 202
ESPRESSO	4111 GARNET 157
DARK GREEN	2455 NIGHT RED 124
KELLY GREEN	3298 CHAMPAGNE 2323
TEAL	1535
TEAL	1535
LIGHT BLUE	2803 ROYAL BLUE 287
CREAM	1535 NEW GOLD 1541
COPPER	1525 SILVER 427
DARK ORANGE	157 BRASS BLUE 3006
DARK GREY	431 GOLD 123
PURPLE	266 SOFT PINK 1895
HUNTER GREEN	357 TEAL 328
FRENCH BLUE	285 ORANGE 2
EGGPLANT	2767 LIGHT ORANGE 157
CURRENT	195 PRAIRIE GREEN 57

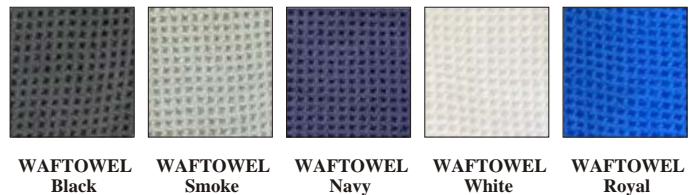
Sakmann Marketing LLC / sakmannmarketing.com



Tri-fold Waffle Towel

Microfiber

Available in 5 colors. Dimensions: 14" wide x 25" long (unfolded). Comes with hole and hook.

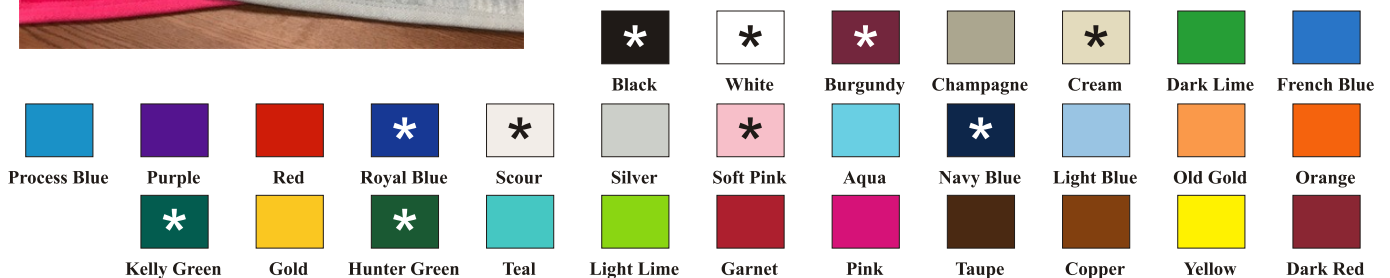


Scrubber Towel

100% Cotton

Available in 30 colors. Towel dimensions: 16" wide x 22" long sheared. Grommet and hook can be added for additional price in brass, silver or black. Hooks priced by finish.

Style Number: SCRUBTOWEL



* **Fancy Premier Towel - 100% Cotton - 16" x 24" Sheared also available in 10 colors: Black, White, Burgundy, Hunter, Navy, Royal, Scour, Red, Kelly and Cream as marked above. Minimum order of 10 per color.**

Style Number: SOLIDTOWEL

Mainline Stripe | 96 / 4 Poly Spandex Jersey



Ultra classic color on color and color with white micro pinstripe, 1/8 inch repeat stripe mixes light tone seasonal colors in a soft, understated design. Available in 6 color ways in short sleeve model and classic rib knit collar. Alan Solly placket, etched pearl and bronze Sakmann logo buttons and longer back tail.



CS-25-BB
Bermuda Blue



CS-25-SL
Salmon

Field Club Stripe | 96 / 4 Poly Spandex Jersey



The Field Club Stripe is our update of one of the men's wear all time classic patterns. A 1/8 inch feeder repeat stripe in 6 colors with knit collar, 3 button Alan Solly placket and open sleeve.



CS-12-PR
Purple



CS-12-NG
New Green



CS-12-OC
Orange Crush



CS-12-SS
Sunset

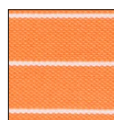
Tourney Stripe - 66% Pima / 34% Poly



The Tourney Pima Pique Stripe features a self collar with solid stand on a 1 inch repeat pin stripe. Super soft, pima/poly fabric with moisture wicking.



CS-09-CB
Cornflower Blue



CS-09-SS
Sunset



CS-09-PR
Purple



CS-09-AF
White

Surfside Stripe - 96 / 4 Poly Spandex Jersey



A five color, multi stripe in poly spandex jersey with open sleeves and no roll rib knit collar. The stripings are a subtle 1/4 inch repeat with coordinating collection colors and a fashion neck tape in the same stripings.



CS-08-BB
Bermuda Blue



CS-08-SL
Salmon

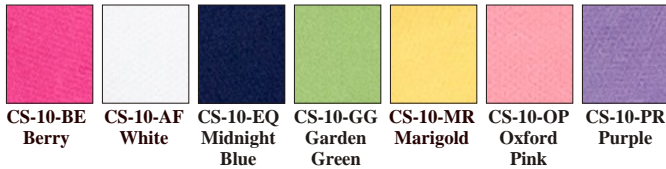
Route30 Stripe | 96 / 4 Poly Spandex Jersey



CS10 - Short Sleeve

CS11 - Long Sleeve

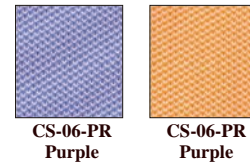
Updated solid with self collar, 3 button placket and half moon yoke. Baby pique in new pima/poly yarn with moisture wicking and enhanced fabric durability. A modern silhouette but designed with comfortable fit features like a longer back tail, ample room through the shoulders and a non-binding open sleeve.



Oxford Pique | 95 Poly / 5 Spandex



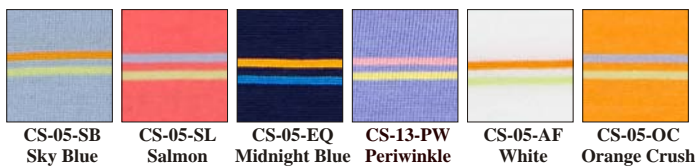
Solid short sleeve knit with self collar.



Fairfield Stripe - 66% Pima / 34% Poly



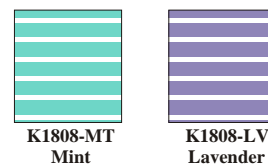
New 3 color framed bar stripe available in 6 new combos with rib knit collar and open sleeve. Ultra soft pima cotton, yarn plated with poly on the inside for moisture wicking. Sakmann logo buttons on a 3 button Alan Solly placket.



Oxford Pique Stripe | 95 Poly / 5 Spandex



Stripe short sleeve knit with self collar.



Long Island Stripe | 66 Pima / 34 Poly



The Long Island Pima Pique stripe is a three color 3/16 multi-stripe with knit collar. Three button placket and solid half moon yoke that matches the color stand.



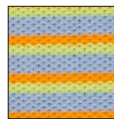
CS-06-NG
New Green



CS-06-BE
Berry



CS-06-PR
Purple



CS-06-SB
Sky Blue

Route30 Stripe | 96 / 4 Poly Spandex Jersey



The Route 30 Stripe is a classic pin stripe in Poly-Spandex jersey fabric with self collar and 3 button placket. Available in 3 striking colors.



CS-30-CB
Cornflower Blue



CS-30-VT
Violet

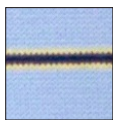


CS-30-SL
Salmon

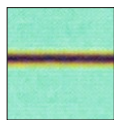
Bedford Stripe - 96 / 4 Poly Spandex Jersey



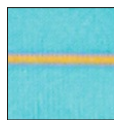
The Bedford Stripe is a new micro bar stripe framed with fine line contrasting stripe in a poly spandex jersey stitch with self collar and 3 button placket.



CS-13-PW
Periwinkle



CS-13-NG
New Green



CS-13-BB
Bermuda Blue

Laurel Highlands Stripe | 66% Pima / 34% Poly



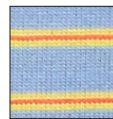
Finely detailed 1/4 inch repeat, 3 color stripe with 1/16 framed stripe on new pima cotton/poly blend with moisture wicking and ultra soft hand feel. Lighter weight and more durable than traditional mercerized cotton.



CS-04-BE
Berry



CS-04-SS
Sunset



CS-04-SB
Sky Blue

Each pre-pack contains six units / Styles may vary



BERRY GROUP



NEW GREEN GROUP



PURPLE GROUP



SALMON GROUP



VIOLET-PERIWINKLE GROUP

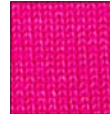


ORANGE CRUSH GROUP



Supima V-neck Sweater

A men's wear classic; 100% Supima cotton, the world's most luxurious fine cotton yarn is knit into a v-neck, long sleeve sweater. At 9 gauge it is heavier weight and incredibly soft. Full fashioned to fit body shape with a handsome drape.



CS-03-BE
Berry



CS-03-PW
Periwinkle



CS-03-GG
Garden Green



CS-03-MR
Marigold



With decades of industry experience, Sakmann Golf is proud to supply some of the country's most prestigious clubs. Here is a small sampling.

Pennsylvania

Saucon Valley CC
Omni Bedford Springs Resort
Hershey CC
Lancaster CC
Connestoga CC
Glen Oak CC
Glen Maura National
Huntsville GC
Fox Hill GC
Aronimink
Lehigh CC
Gulph mills GC
Berkshire CC
Manufacturers G & CC
Merion
Cedarbrook CC
Rolling Rock Club
Southpointe GC
Pittsburgh Field Club
Fox Chapel GC
Longue Vue Club
New Castle CC
Indiana CC
Sunnehanna CC
Nemacolin Woodlands Resort
Moselem Springs GC
The Springhaven Club
Commonwealth National GC
Union League Club at Torresdale
Northampton CC
Lookaway GC
Applebrook GC
Centre Hills CC
Chester Valley GC
Edgewood CC
French Creek GC
Stonewall Links
Radley Run CC

New Jersey

Arcola
Copper Hill CC
Old York CC
Spring Brook CC
Wildwood CC
Morris County GC
Mannasquan River GC
Navesink CC
Rumson CC
Baltusrol
Somerset Hills
New Jersey National GC
Glen Ridge CC
Trenton CC
Pine Valley GC
Knickerbocker CC
Riverton CC
Trump National Bedminster

South Carolina

The Dunes Club
The Cliffs
Thornblade Club
Colleton River
Belfair
Port Royal
Oyster Reef Club
Brays Island Plantation
Hilton Head National
Spring Island
Bulls Bay
Callawassie
Dataw Island Club
Reserve at Woodside Planation
Sage Valley
Surf Club
Woodfin Ridge

New York

The Bridge GC
Century CC
Schuyler Meadows CC
North Hempstead CC
Meadowbrook Club
Apawamis Club
Garden City CC
Winged Foot Club
Whippoorwill Club
Waccabuc
Siwanoy CC
Sleepy Hollow CC

Massachusetts

Myopia Hunt Club
Tedesco CC
Salem CC
Willowbend CC

Georgia

The Landings Club
Westlake CC

Delaware

Wilmington CC
Biderman Club
Vic Mead Hunt Club
Baywood Greens Resort
Cripple Creek CC
Newark CC
White Clay Creek GC

West Virginia

Greenbrier Sporting Club
Pikewood

North Carolina

Benvenue CC
Bermuda Run CC
Bryan Park GC
Mt Air CC
Blowing Rock CC
Mountaintop
CC of Smithfield
Hound Ears Club
Cullasaja
Grove Park Inn
Forsyth CC
Biltmore Estate
Grandfather G and CC
Linville GC
Wilson CC

Florida

Admirals Cove CC
Bent Pine CC
Deercreek
Indian River Plantation
Naples Alke CC
Royal Palm CC
Woodfield

Virginia

International CC
Army Navy CC
Washington G and CC
Golfdom
Bellehaven CC
Club at Creighton Farms
Stoneleigh

Maryland

Bulle Rock GC
Cattail Creek CC
Chartwell CC
Fountainhead CC
Green Spring Valley Hunt Club
Elkridge Club
CC of Maryland
Congressional
Rocky Gap Resort
Chevy Chase Club
Hillendale CC
Piney Branch CC
Suburban Club
Lakewood CC

Connecticut

Connecticut GC
Innis Arden GC
Stanwich Club
Greenwich CC
Paterson Club
Shorehaven GC

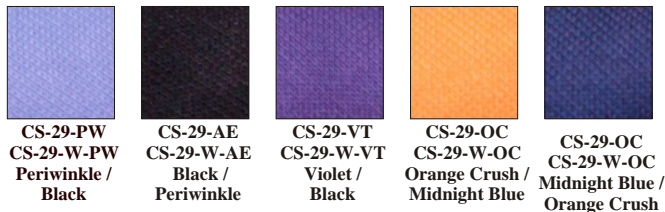
Southport L/S & Vest | 60% Pima / 40% Poly

A luxurious hand fabric made of 60% pima cotton and 40% polyester in a Pique Interlock. Men's quarter zip pullover, long sleeve with contrast neck tape and locker loop. Women's full zip.

Men's



Women's



Men's Quarter Zip Vest

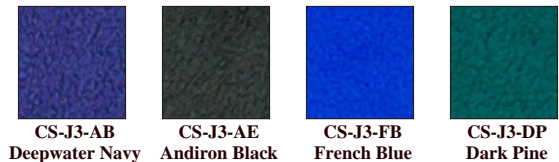


Adirondack Fleece | 100% Poly Fleece

Long Sleeve 1/4 Zip



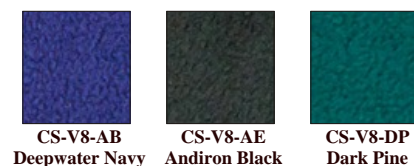
Light weight warmth in a washable micro fleece makes this a golf favorite. Detailed with top-stitched yoke and poly woven wind blocker lining.



Full Zip Vest



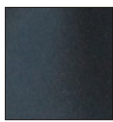
Same fabric as l/s pullover CSJ3 but in full zip vest with shoulder trim and side seam zipper pockets



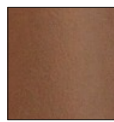
Allegheny Lined Fleece Jacket



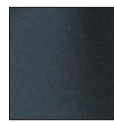
New 100% poly bonded fleece outer shell with woven poly fleece stretch lining. Side pockets, banded bottom and knit cuffs. Classic bomber style silhouette. The perfect golf jacket.



CSJ-15-AB
Navy



CSJ-15-TB
Tobacco



CSJ-15-AE
Andiron Black

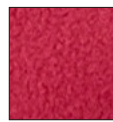
Allegheny Wind Fleece L/S Pullover



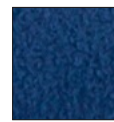
A great new micro fleece in 100% poly that feels soft and is amazingly durable. The outer fabric is bonded to the inner fabric creating a windproof and super warm golf pullover. It features the fleece side out in a quarter zip pullover with knit cuffs, banded bottom, and raglan shoulder for ease of movement.



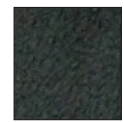
CS-22-TB
Tobacco /
Black



CS-22-DR
Deep Red /
Charcoal



CS-22-AB
Navy /
Cactus Green

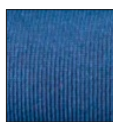


CS-22-AE
Andiron Black /
Cadet Blue

Allegheny Soft Shell Pullover



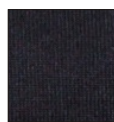
This new wind shirt in 100% poly is shaped in an updated silhouette with a set on shoulder and banded bottom. The fleece is inside and the soft cotton shirt fabric is on the outside.



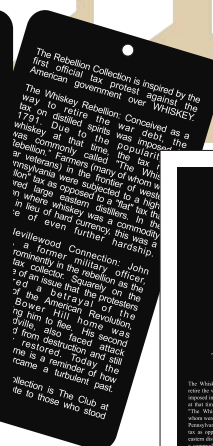
CS-23-HA
Cadet Blue /
Andiron Black



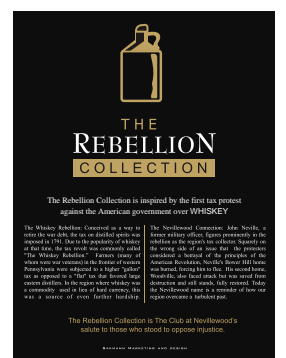
CS-23-CG
Cactus Green /
Navy



CS-23-AE
Black /
Tobacco



SAKMANN
DESIGN &
PRIVATE
BRANDING
PROGRAM



- Custom Art Development
- High Resolution Logos
- Brand Messaging
- Digitizing and Embroidery
- Unique Labels, Hang Tags and Signage

DESIGNING A CUSTOM BRANDING PROGRAM



BUILD AND PROMOTE YOUR BRAND IDENTITY

Eliminate giving free advertising to another company on your products

Present consistent messaging to build brand recognition

Increase customer loyalty and demand for your product



THE SAKMANN DIFFERENCE

Creation of highly detailed art

Customized design materials instead of template based layouts

Production quality that is unsurpassed

Affordable rates

A staff with decades of industry experience

We look forward to creating a custom branding program for your unique identity!

Sakmann Marketing LLC / sakmannmarketing.com

CAPABILITIES

Custom Artwork



Brand Identity Materials



Digitizing
& Embroidery



Recreate Low Res
or Lost Art



Sakmann specializes in new concept and custom brand development.

The case study below shows the process to create Yardley's Ghost Tree and "The Yard" branding.

01

DESIGN

New Art and
Concept
Development



Yardley Ghost Tree



Ghost tree was stylized to highlight main elements for the scalable, high resolution logo.



Samples were created of this complex logo on black background and art adjusted for the best definition of the "ghost element" even at small sizes.

02

CUSTOMIZE

Create specific color profiles based on club preferences and to highlight details

03

BRAND

Create branding materials including woven labels, hang tags and DST for embroidery



Yardley's existing look, feel and club colors were utilized to launch "The Yard" Private Brand featuring the landmark Ghost Tree.

The Yard
Private Brand





Sakmann Marketing Group, Inc.
610.375.8372 / chuck@chucksakmann.com
www.sakmannmarketing.com